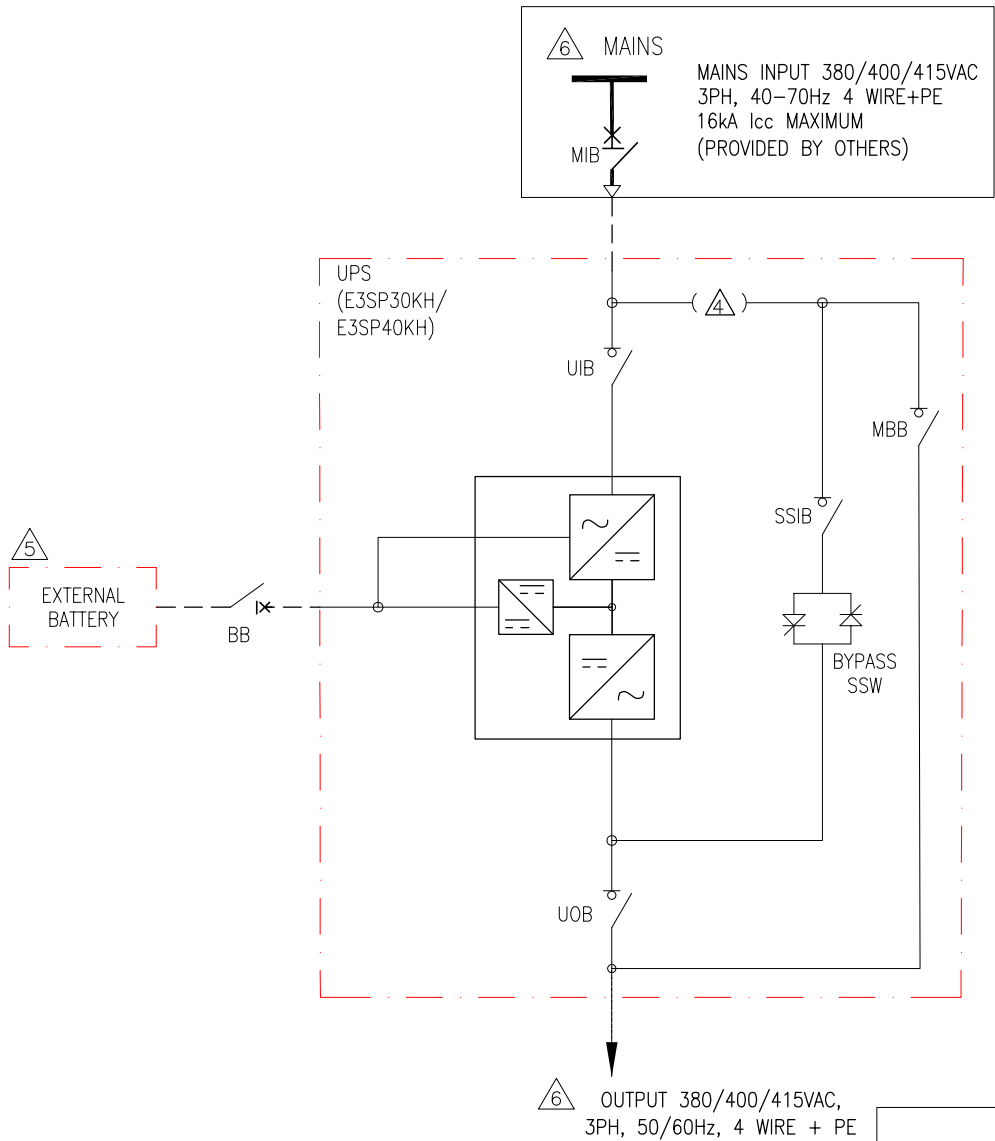
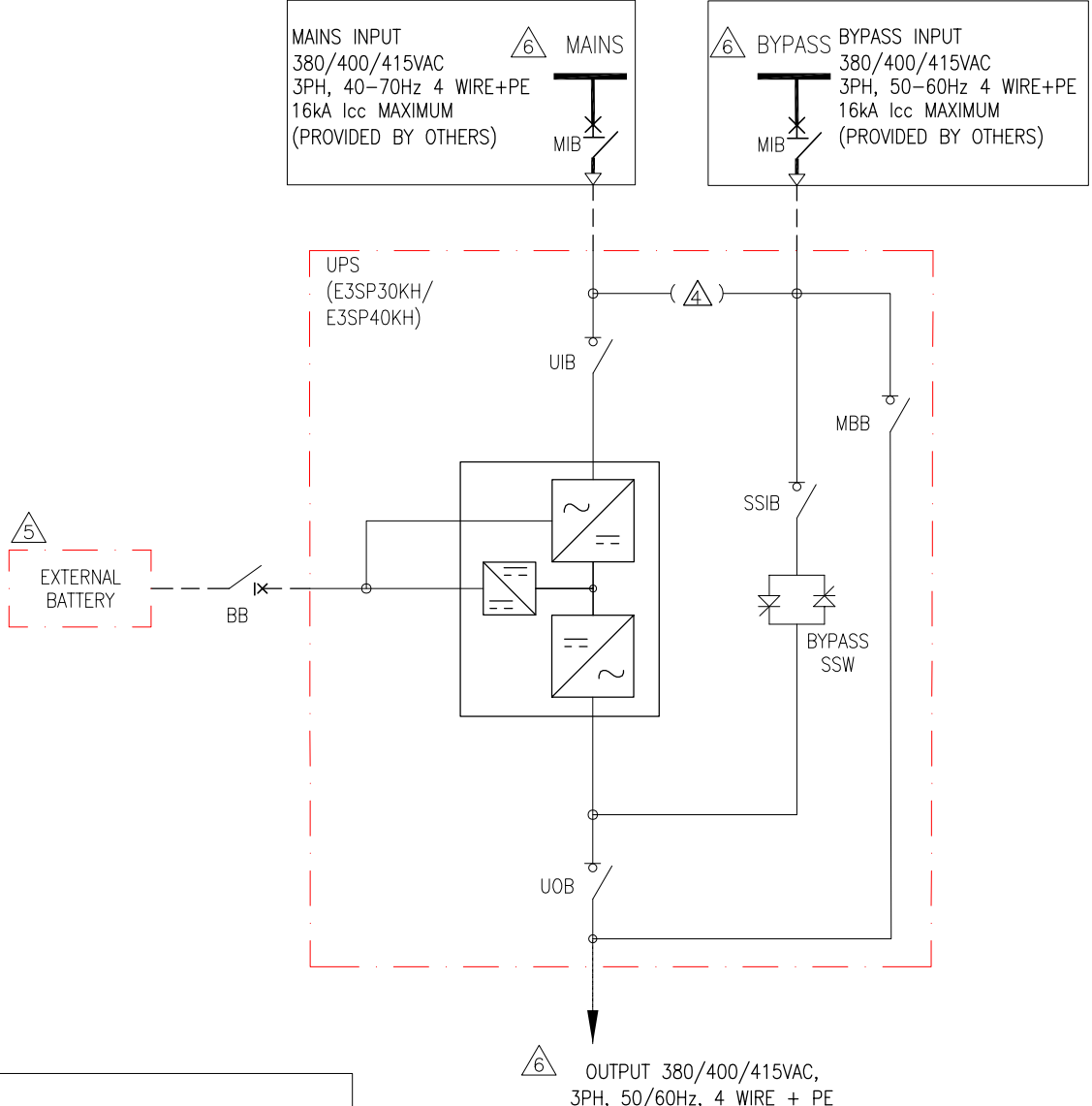


# SINGLE MAINS CONFIGURATION



# DUAL MAINS CONFIGURATION



## NOTES:

1. INSTALLATION SHALL COMPLY WITH ALL APPLICABLE NATIONAL AND LOCAL ELECTRICAL REGULATIONS.
2. REFER TO PRODUCT DOCUMENTATION FOR ADDITIONAL DETAILS PRIOR TO INSTALLATION AND SITE PREPARATION WORK
3. DRAWING DEPICTS POWER SYSTEM CONNECTIONS AND IS NOT REPRESENTATIVE OF PHYSICAL LAYOUT.
4. SINGLE MAINS CONFIGURATION IS DEFAULT.
5. FOR DUAL MAINS CONFIGURATION REMOVE THE 3 SHORTING JUMPERS.
6. BATTERIES CAN BE CONNECTED IN SERIES DEPENDING UPON THE RUNTIME REQUIREMENTS.
7. UP TO 4 UPS CAN BE CONNECTED IN PARALLEL.
8. REFER TO SHEET-4 FOR ELECTRICAL DATA.
9. CABLE LUGS ARE PROVIDED BY OTHERS. OPTIONAL KIT E3SPOPT003 CAN BE ORDERED FOR 30-40KVA CABLE LUGS.

## LEGEND:

----- CABLE PROVIDED BY OTHERS

THIS DRAWING AND SPECIFICATIONS HEREIN ARE THE PROPERTY OF SCHNEIDER ELECTRIC AND SHALL NOT BE COPIED, REPRODUCED OR USED IN WHOLE OR IN PART, AS THE BASIS FOR THE MANUFACTURE OR SALE OF ITEMS WITHOUT WRITTEN PERMISSION FROM SCHNEIDER ELECTRIC. THIS DRAWING IS BASED UPON LATEST AVAILABLE INFORMATION AND IS SUBJECT TO CHANGE WITHOUT NOTICE.

**Schneider Electric**

TITLE:  
EASY UPS 3S PRO  
30 - 40KVA, 400V, 3PH  
WITHOUT BATTERY MODULES  
SYSTEM ONLINE DIAGRAM-1 UPS

PROJECT: SUBMITTAL DRAWINGS SHEET 1 OF 4

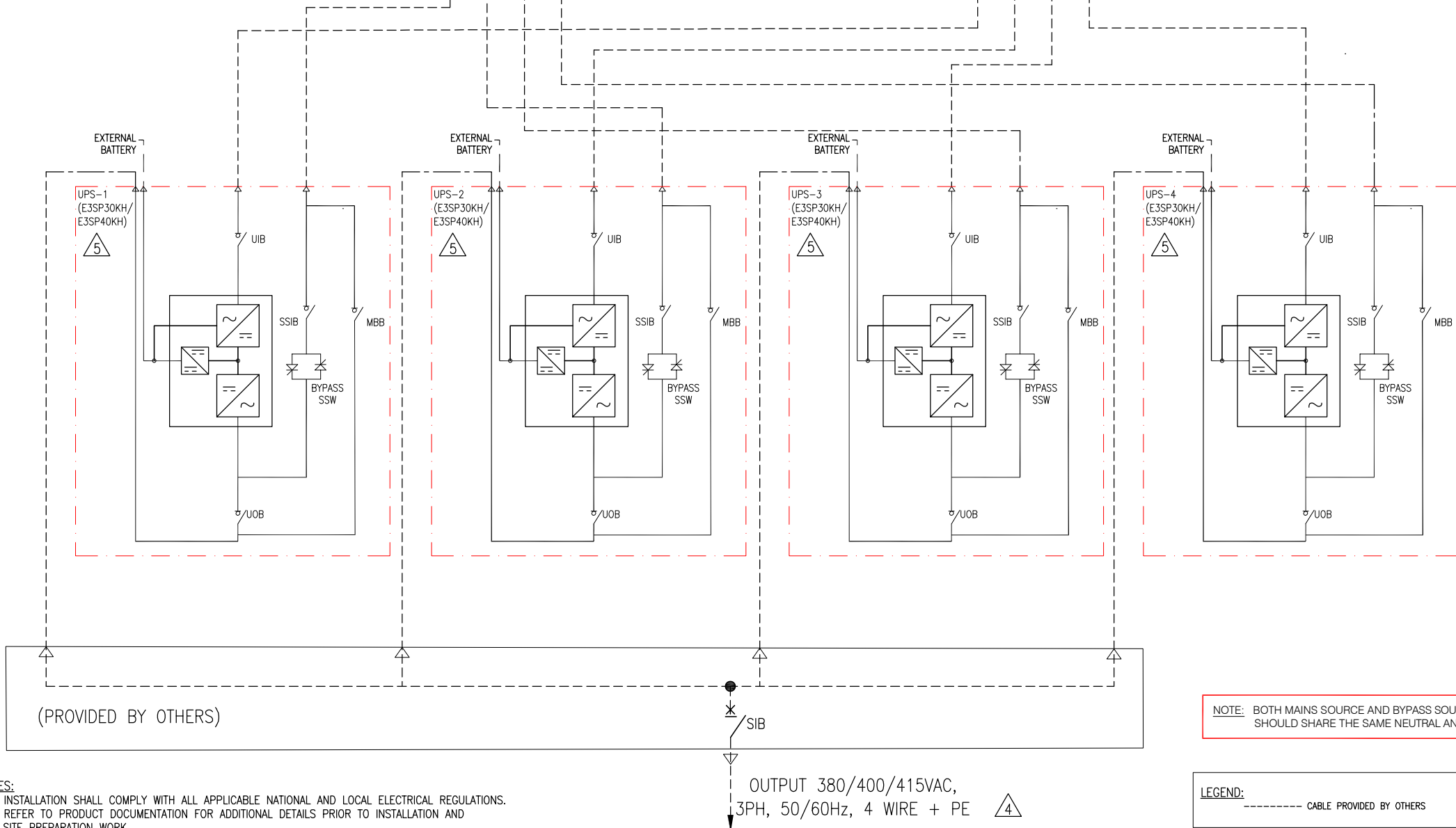
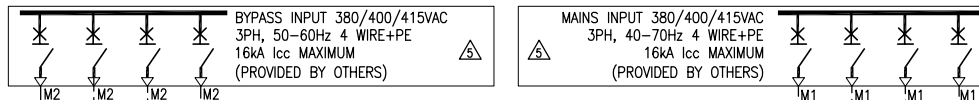
DWG NO: E3SP30K40H-SD

DRAWN:	TRASSIA	28-FEB-25
ENGINEER:	YAPING YANG	28-FEB-25
APPROVED:	PETER WANG	28-FEB-25

REV: 0  
FIRST ANGLE PROJECTION



#### 4 UPS IN PARALLEL – DUAL MAINS



NOTE: BOTH MAINS SOURCE AND BYPASS SOURCE SHOULD SHARE THE SAME NEUTRAL AND PE.

LEGEND:

----- CABLE PROVIDED BY OTHERS

- NOTES:**
1. INSTALLATION SHALL COMPLY WITH ALL APPLICABLE NATIONAL AND LOCAL ELECTRICAL REGULATIONS.
  2. REFER TO PRODUCT DOCUMENTATION FOR ADDITIONAL DETAILS PRIOR TO INSTALLATION AND SITE PREPARATION WORK
  3. DRAWING DEPICTS POWER SYSTEM CONNECTIONS AND IS NOT REPRESENTATIVE OF PHYSICAL LAYOUT.
  - ⚠ THE NUMBER OF OUTPUT WIRES MUST MATCH THE NUMBER OF INPUT WIRES IN SINGLE MAINS OR BYPASS WIRES FOR DUAL MAINS.
  - ⚠ REFER TO SHEET-4 FOR ELECTRICAL DATA.
  6. UP TO 4 UPS CAN BE CONNECTED IN PARALLEL.
  7. CABLE LUGS ARE PROVIDED BY OTHERS. OPTIONAL KIT E3SPOPT003 CAN BE ORDERED FOR 30-40KVA CABLE LUGS.

THIS DRAWING AND SPECIFICATIONS HEREIN ARE THE PROPERTY OF SCHNEIDER ELECTRIC AND SHALL NOT BE COPIED, REPRODUCED OR USED IN WHOLE OR IN PART, AS THE BASIS FOR THE MANUFACTURE OR SALE OF ITEMS WITHOUT WRITTEN PERMISSION FROM SCHNEIDER ELECTRIC. THIS DRAWING IS BASED UPON LATEST AVAILABLE INFORMATION AND IS SUBJECT TO CHANGE WITHOUT NOTICE.

**Schneider**  
Electric

TITLE: EASY UPS 3S PRO  
30 - 40KVA, 400V, 3PH  
WITHOUT BATTERY MODULES  
SYSTEM ONLINE DIAGRAM-4 UPS DUAL MAINS

PROJECT: SUBMITTAL DRAWINGS SHEET 3 OF 4

DWG NO: E3SP30K40H-SD

NS	DRAWN:	TRASSIA
	ENGINEER:	YAPING YANG
4	APPROVED:	PETER WANG

REV.	0
FIRST ANGLE PROJECTION	

ELECTRICAL DATA SHEET		
UPS RATING	30kVA	40kVA
INPUT SPECIFICATIONS		
INPUT VOLTAGE	380V/400V/415V	380V/400V/415V
NOMINAL INPUT CURRENT (A)	48/46/44	64/61/58
MAXIMUM INPUT CURRENT (A)	60/57/55	81/77/74
INPUT CURRENT LIMITATION (A)	60/57/55	81/77/74
INPUT FREQUENCY	40-70Hz	
INPUT WIRING	3P+N+PE	
INPUT THDI	< 3%@ Full linear load, < 4%@ Full non-linear load	
BYPASS SPECIFICATIONS		
BYPASS VOLTAGE	380V/400V/415V	380V/400V/415V
MINIMUM BYPASS VOLTAGE	342/360/373	342/360/373
MAXMUM BYPASS VOLTAGE	418/440/457	418/440/457
NOMINAL BYPASS CURRENT (A)	47/44/43	62/59/57
BYPASS FREQUENCY	50/60Hz	
BYPASS WIRING	3P+N+PE	
OUTPUT SPECIFICATIONS		
OUTPUT VOLTAGE	380V/400V/415V	380V/400V/415V
NOMINAL OUTPUT CURRENT (A)	46/44/42	61/58/56
OUTPUT FREQUENCY	50/60Hz	
OUTPUT WIRING	3P+N+PE	
OUTPUT THDU	<1% for 100% balanced linear load, < 5% for non-linear load	
BATTERY SPECIFICATIONS		
CHARGING POWER	Programmable from 1% to 20% of UPS capacity. Default is10%.	
MAXIMUM CHARGING POWER (W)	6000	8000
NOMINAL BATTERY VOLTAGE (VDC)	384 to 480	
NOMINAL FLOAT VOLTAGE (VDC)	436 to 545	
END OF DISCHARGE VOLTAGE (FULL LOAD) (VDC)	308 to 384	
END OF DISCHARGE VOLTAGE (NO LOAD) (VDC)	336 to 420	
BATTERY CURRENT AT FULL LOAD AND NOMINAL BATTERY VOLTAGE (A)	82-65	109-87
BATTERY CURRENT AT FULL LOAD AND MINIMUM BATTERY VOLTAGE (A)	102-82	136-109
RIPPLE CURRENT	<5% C10	
MAXIMUM SHORT CIRCUIT WITHSTAND	Icc=16kA	
RECOMMENDED CABLE SIZES		
INPUT CABLE SIZE (mm2)	16	25
BYPASS CABLE SIZE (mm2)	16	25
OUTPUT CABLE SIZE (mm2)	16	25
BATTERY INPUT CABLE SIZE (mm2)	25	35
PE CABLE SIZE (mm2)	16	16

NOTES:

1.INSTALLATION SHALL COMPLY WITH ALL APPLICABLE NATIONAL AND LOCAL ELECTRICAL REGULATIONS.

2.REFER TO PRODUCT DOCUMENTATION FOR ADDITIONAL DETAILS PRIOR TO INSTALLATION AND SITE PREPARATION WORK.